



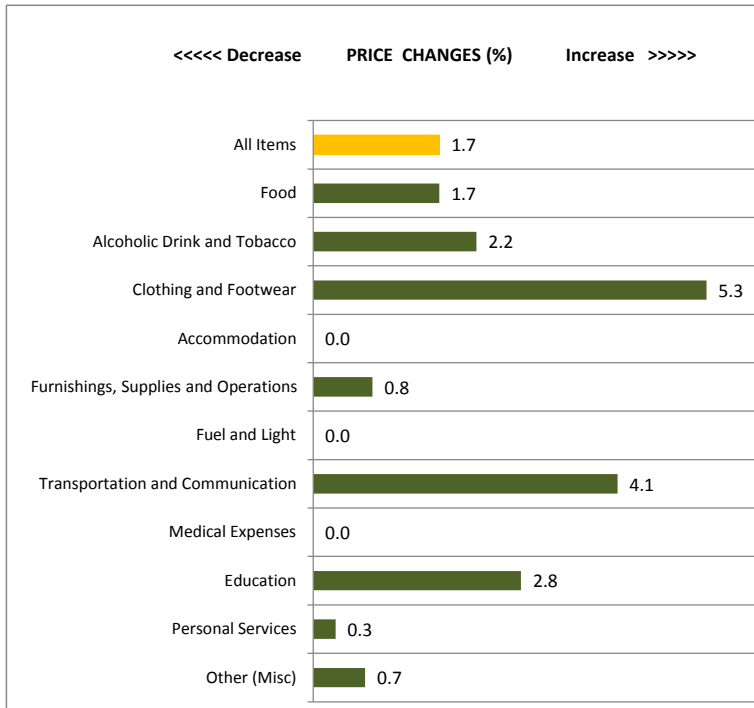
# Antigua and Barbuda CONSUMER PRICE INDEX



Release date: 8 Aug 2014

**Jul 2014 Inflation Rate 1.7%**

## Headline Inflation: Year-on-Year Changes for Jul 2014 compared to Jul 2013



In July 2014, the Consumer Price Index increased by 1.7%. Food prices rose by 1.7% over the twelve month period from July 2013 to July 2014. The index for Fruits and Vegetables increased by 6.2% over the same period. Price changes for grapes and broccoli contributed to this increase.

The Meat index increased by 2.8%. Six of the seven sub-categories recorded increases except for Fish which declined by 3.2%. The Poultry index increased by 3.4%, this increase was impacted by the average price increase in chicken wings and turkey wings. In the Fish sub-category, the average price per pound for salted cod and sardine contributed to the decrease.

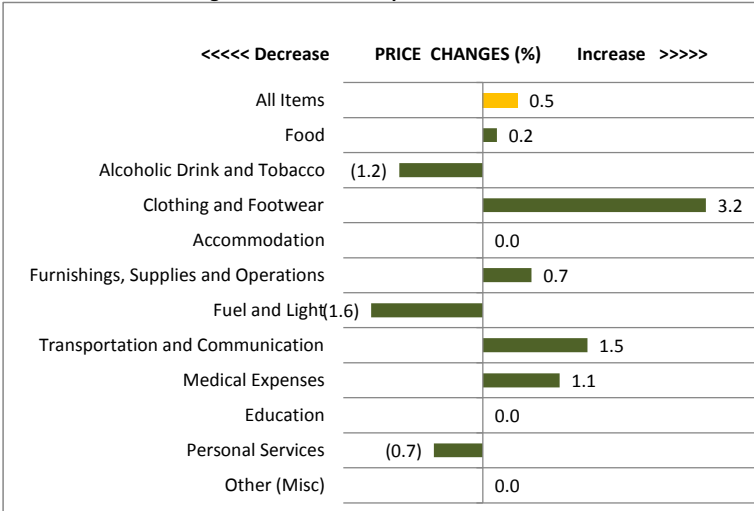
The Fuel and Light index had no change over the period. The fuel variation rate remained at 79 cents for both periods.

In Clothing and Footwear, the index increased by 5.3%. The index for Clothing increased by 5.2% and the Footwear index increased by 5.5%. Mens and Boys clothing dominated the increase within the Clothing Category, the increase in the average price of mens and boys dress pants was the major factor in the increase.

The footwear index was influenced by the average price increase of sneakers.

The All Items less Food and Energy index increased by 2.0% over the twelve month period. The index for Transportation and Communication increased by 4.1%. The sub-category Operation of Personal Transportation increased 4.8%, this increase was influenced by the increase cost of a 1500cc motor vehicle and insurance for the same type vehicle.

## Month-to-Month Changes for Jul 2014 compared to Jun 2014



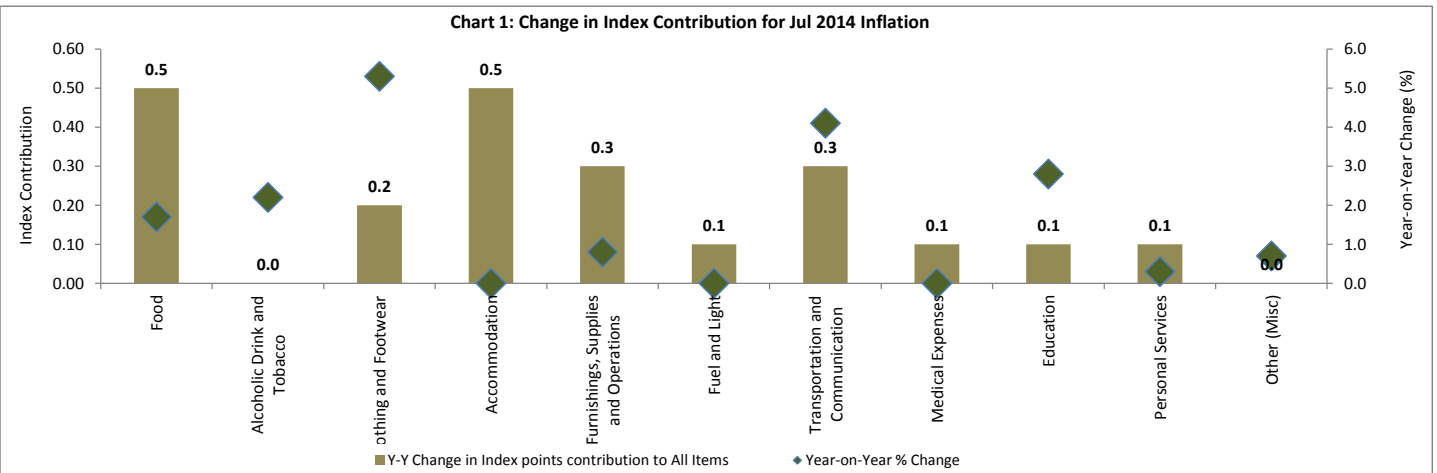
There was 0.5% increase in the All Item index between June and July 2014. The index for the Food category increased by 0.2% between this period. The Meat index increased by 2.4%, this was influenced primarily by the increase of the poultry index.

Alcoholic Drink and Tobacco declined by 1.2% over the same period. Imported vodka decreased from \$37.52 to \$37.42 and imported beer from \$4.35 to \$4.29.

The Fuel and Light index decreased by 1.6%. The fuel variation rate decreased from 81 cents in June 2014 to 79 cents in July 2014.

Clothing and Footwear, Furnishings, Supplies and Operation and Transportation and Communication recorded increases from the last collection period in April 2014. Clothing and Footwear recorded an increase of 3.2%. Furnishings, Supplies and Operation index increased 0.7% and Transportation and Communication index also increased by 1.5%.

Chart 1: Change in Index Contribution for Jul 2014 Inflation



**Table 1: Examples of Goods and Services in the 2001-based Consumer Shopping Basket**

Main Expenditure Categories	No. of Items	Example of Goods and Services for which prices are collected to calculate the inflation rate	Frequency of price collection
Food	173	<i>Breakfast cereal, milk, coffee, juices, chicken, wine, vegetables, fruits, full-service meals, snacks</i>	Monthly
Alcoholic Drink and Tobacco	12	<i>Beer, stout, rum, whisky</i>	Monthly
Clothing and Footwear	65	<i>Men's pants, boys shorts, women's dresses, brassieres, underwear, infant's disposable diapers, watches, rings, bags</i>	Quarterly
Accommodation	10	<i>Rent paid, repairs and maintenance, property taxes, mortgage payments</i>	Quarterly
Furnishings, Supplies and Operations	74	<i>Sofas, mattress, kitchen cabinets, dressing table, rugs, linoleum, curtains, glassware; hourly wage rate</i>	Quarterly
Fuel and Light	2	<i>Electricity, LPG cooking gas</i>	Monthly
Transportation and Communication	27	<i>cellular phones, cars, license, gasoline, insurance, driving permit</i>	Quarterly
Medical Expenses	16	<i>doctor's bill, hospital care room rate, medicine</i>	Quarterly
Education	8	<i>Tuition fees, books, school supplies, exam fees</i>	Quarterly
Personal Services	10	<i>Hair cut, pedicure, manicure, driving lessons</i>	Quarterly
Other (Misc)	45	<i>Body lotion, toothpaste, shampoo, carnival costumes, gym membership</i>	Monthly, Quarterly
<b>Total number of goods and services in the basket</b>	<b>442</b>	<b>Prices are collected from the second Monday to the second Thursday of every month</b>	

<sup>1</sup> Outlets refer to the businesses where prices are collected (e.g supermarkets). The same outlets are used for Food, Alcoholic Drink & Tobacco, and some Other (Misc) items

### What is the Consumer Price Index?

The Consumer Price Index (CPI) is a statistical indicator of changes in the general level of prices of consumer goods and services purchased by private households. The CPI measures price movements of a fixed quality and quantity of goods and services. The mix of these consumer goods and services comprising the CPI are referred to as a "shopping basket." In constructing this "shopping basket", the selected goods and services are organised first by commodity type. They are then divided into sections, then sub-groups and then assigned to a major expenditure category. The Antigua and Barbuda CPI has 26 sections, 30 sub-groups and 11 major categories.

### What is the Base Period?

The base period (base year) is the time period that is used as a reference point for measuring the price change of goods and services. The base period for the Antigua and Barbuda CPI is January 2001.

The base period index is represented as 100.0. (Usually presented as 2001 = 100). So for instance, if the April 2010 CPI for chicken legs is 167.1, then it means that the price for chicken legs has gone up by 67.1% since 2001. Similarly, if the January 2010 CPI for bread is 93.1, then the price of bread has dropped by 6.9% compared to its price in 2001.

### What is Inflation?

Inflation is the process of rising prices, resulting in diminishing purchasing power of a given amount of money. There are three expressions of price changes:

- year-on-year (*the inflation rate*)
- month-to-month
- annual average (or annualised average)

The annual average CPI is derived by summing the CPI for each month of the year and dividing by 12.

### What are Weights?

Weights can be considered in the same way we would express how much we spend on various goods and services each month. Just like a monthly salary can be broken down as 20% on rent, 25% food, 15% mortgage, 10% on utilities and so on, the CPI weights are a collective expression of how households would generally spend their monthly income on goods and services.

The weights for this series of CPI were drawn from a survey of a sample of households in 2001 (the base period). Each household was asked to keep a record of their expenditure for one month. Once completed, the expenditures were added to determine the pattern. This pattern is what is referred to as the weights.

The current weights assume that each month, households would spend the most on *Accommodation* (218.3) followed by *Food* (214.2) and *Transportation and Communication* (153.5). Households would also spend the least on *Alcoholic Drink and Tobacco* (1.6).

### Index Points Contribution

Contribution of each expenditure category (category weight over All Items weight) to the All Items index points change.

$$\begin{aligned}
 \text{Year-on-Year Inflation} &= \frac{\text{June 2010 CPI} - \text{June 2009 CPI}}{\text{June 2009 CPI}} \times 100 \\
 \text{Month-to-Month Price Changes} &= \frac{\text{June 2010 CPI} - \text{May 2010 CPI}}{\text{May 2010 CPI}} \times 100 \\
 \text{Annualised Inflation Rate} &= \frac{\text{Average 2010 CPI} - \text{Average 2009 CPI}}{\text{Average 2009 CPI}} \times 100
 \end{aligned}$$

The compilation of the CPI and the calculation of the inflation rate involve the processing of hundreds of price quotations. The Statistics Division wishes to acknowledge the cooperation of the business community in supplying the required prices and accommodating the Statistical Officers on their premises. Price collection is authorised by the *General Statistics Act, No. 13 of 1975*.

2nd Floor ACT Building | Cnr. Market & Church Streets  
 Tel: (268) 462 3233 / 562 7491 | Fax: (268) 562 2542  
 email: stats@ab.gov.ag | www.antigua.gov.ag

Table 2: CPI and Inflation Rate for Main Categories, Sub-groups and Sections

Expenditure Category and Sub Groups  - means zero      0.0 means negligible	Jan 2001 weights	Consumer Price Indices			Year-on-Year % Change	Month-to-Month % Change
		Jul-2014	Jun-2014	Jul-2013	Jul-2014	Jul-2014
					Jul-2013	Jun-2014
<b>All Items</b>	<b>1000.00</b>	<b>133.77</b>	<b>133.11</b>	<b>131.52</b>	<b>1.7</b>	<b>0.5</b>
<b>FOOD:</b>	<b>214.20</b>	<b>153.40</b>	<b>153.13</b>	<b>150.85</b>	<b>1.7</b>	<b>0.2</b>
Bakery & Cereal Products	199.44	118.44	119.51	121.37	(2.4)	(0.9)
Bakery	875.34	115.53	116.80	119.67	(3.5)	(1.1)
Cereal	124.66	138.87	138.53	133.27	4.2	0.2
Meats	225.02	184.74	180.38	179.73	2.8	2.4
Beef	59.92	217.82	214.52	199.34	9.3	1.5
Pork	37.71	164.90	162.65	150.68	9.4	1.4
Lamb	36.48	233.87	233.87	208.27	12.3	-
Mutton	51.99	209.50	208.65	193.72	8.1	0.4
Preserved Meat	156.39	199.03	199.31	194.87	2.1	(0.1)
Poultry	316.64	226.35	213.49	218.88	3.4	6.0
Fish	340.85	126.86	126.87	130.99	(3.2)	-
Dairy Products	93.37	187.39	186.73	184.87	1.4	0.4
Milk	614.06	191.81	192.29	188.37	1.8	(0.2)
Cheese	209.94	188.79	189.33	183.05	3.1	(0.3)
Eggs	176.00	170.29	164.26	174.81	(2.6)	3.7
Fats & Oils	33.11	173.92	174.31	175.53	(0.9)	(0.2)
Butter/Oils	1000.00	173.92	174.31	175.53	(0.9)	(0.2)
Fruits & Vegetables	185.81	144.80	144.79	136.29	6.2	-
Fruits	222.14	160.59	155.12	157.40	2.0	3.5
Fruit Juices	170.54	142.46	140.85	135.36	5.2	1.1
Vegetables	498.73	140.24	143.58	128.68	9.0	(2.3)
Starchy Foods	108.60	137.07	135.36	129.51	5.8	1.3
Sugars, Jams, Confectionery	39.29	163.24	161.51	165.25	(1.2)	1.1
Sugar	776.23	166.16	164.52	169.88	(2.2)	1.0
Syrups	92.70	174.07	169.22	164.06	6.1	2.9
Jams & Jellies	17.80	105.09	105.09	105.09	-	-
Candy	113.27	143.50	143.50	143.96	(0.3)	-
Hot Beverages	15.30	223.33	223.06	209.27	6.7	0.1
Foods n.e.s	147.96	142.84	144.44	140.48	1.7	(1.1)
Condiments & Spices	230.21	188.17	195.19	194.47	(3.2)	(3.6)
Miscellaneous Food	159.46	120.55	120.43	119.77	0.7	0.1
Meals Out	610.33	131.56	131.56	125.53	4.8	-
Non-Alcoholic Beverages	60.68	116.65	115.83	120.58	(3.3)	0.7
<b>ALCOHOLIC DRINK &amp; TOBACCO:</b>	<b>1.60</b>	<b>139.92</b>	<b>141.65</b>	<b>136.87</b>	<b>2.2</b>	<b>(1.2)</b>
Alcoholic Beverages	888.15	140.59	142.53	137.44	2.3	(1.4)
Tobacco	111.85	134.62	134.62	132.32	1.7	-
<b>CLOTHING &amp; FOOTWEAR:</b>	<b>110.60</b>	<b>101.29</b>	<b>98.11</b>	<b>96.19</b>	<b>5.3</b>	<b>3.2</b>
Clothing	755.67	97.34	95.04	92.50	5.2	2.4
Men's	274.10	112.51	105.42	98.54	14.2	6.7
Boys'	70.06	122.70	119.62	110.43	11.1	2.6
Women's	335.61	56.42	56.09	56.36	0.1	0.6
Girls'	65.87	86.79	86.26	86.26	0.6	0.6
Infants'	33.47	108.83	108.83	108.83	-	-
Accessories & Raw Materials	220.90	134.05	134.05	133.60	0.3	-
Footwear	244.33	113.53	107.62	107.62	5.5	5.5
<b>ACCOMMODATION</b>	<b>218.30</b>	<b>109.68</b>	<b>109.68</b>	<b>109.68</b>	<b>-</b>	<b>-</b>
<b>FURNISHINGS, SUPPLIES &amp; OPERATIONS:</b>	<b>126.00</b>	<b>138.18</b>	<b>137.22</b>	<b>137.03</b>	<b>0.8</b>	<b>0.7</b>
Furniture, Fixtures & Floor Coverings	209.17	177.52	173.33	173.24	2.5	2.4
Household Textiles & Furnishings/ Soft Furnishings	66.19	115.83	115.33	111.49	3.9	0.4
Household Utensils	6.72	150.85	154.15	128.80	17.1	(2.1)
Household Appliances	263.73	123.83	122.74	123.72	0.1	0.9
Services, Household Operations & Goods	454.19	131.46	131.95	131.94	(0.4)	(0.4)
<b>FUEL &amp; LIGHT</b>	<b>63.90</b>	<b>156.58</b>	<b>159.19</b>	<b>156.58</b>	<b>-</b>	<b>(1.6)</b>
<b>TRANSPORTATION &amp; COMMUNICATION:</b>	<b>153.50</b>	<b>137.89</b>	<b>135.87</b>	<b>132.47</b>	<b>4.1</b>	<b>1.5</b>
Communication Services	92.78	118.31	118.31	117.86	0.4	-
Operation of Personal Transportation	823.48	139.95	137.59	133.56	4.8	1.7
Repairs & Maintenance of Personal Transportation	35.48	137.43	135.46	133.11	3.2	1.5
Transport Services	48.26	140.71	140.71	141.48	(0.5)	-
<b>MEDICAL EXPENSES:</b>	<b>27.60</b>	<b>134.46</b>	<b>132.99</b>	<b>134.52</b>	<b>-</b>	<b>1.1</b>
Private Practitioners	829.46	133.27	131.51	133.32	-	1.3
Pharmaceutical	170.54	140.20	140.20	140.36	(0.1)	-
<b>EDUCATION</b>	<b>23.40</b>	<b>192.90</b>	<b>192.90</b>	<b>187.69</b>	<b>2.8</b>	<b>-</b>
<b>PERSONAL SERVICES:</b>	<b>43.00</b>	<b>151.36</b>	<b>152.50</b>	<b>150.84</b>	<b>0.3</b>	<b>(0.7)</b>
Personal Care	1000.00	151.36	152.50	150.84	0.3	(0.7)
<b>OTHER (MISCELLANEOUS):</b>	<b>17.90</b>	<b>124.16</b>	<b>124.21</b>	<b>123.24</b>	<b>0.7</b>	<b>-</b>
Personal Effects	1000.00	124.16	124.21	123.24	0.7	-
All Items less Food		<b>128.41</b>	<b>127.65</b>	<b>126.25</b>	<b>1.7</b>	<b>0.6</b>
All Items LESS Energy		<b>130.79</b>	<b>129.89</b>	<b>128.35</b>	<b>1.9</b>	<b>0.7</b>
All Items less Food and Energy		<b>123.94</b>	<b>122.85</b>	<b>121.53</b>	<b>2.0</b>	<b>0.9</b>

**Table 3: Distribution of Changes in the Inflation Rate**

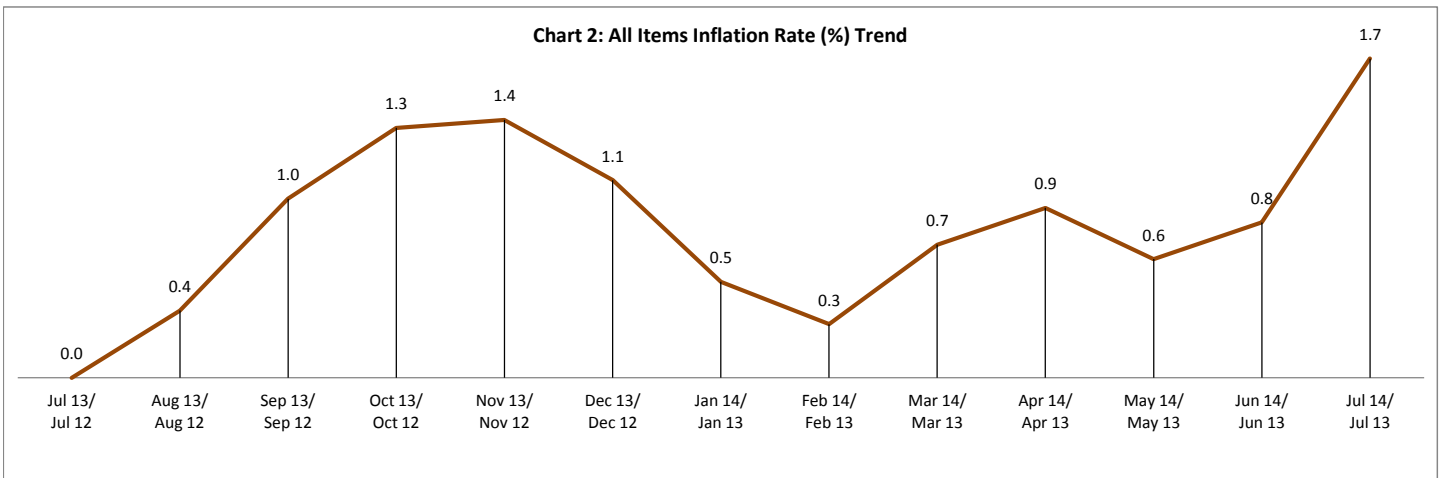
	No. of categories	No. of Decreases	No. of Increases	No. of No Changes
<b>Jul 2014 compared to Jul 2013</b>				
Main Expenditure Level	11	1	8	2
Sub Group Level	26	8	18	0
Section Level	30	7	21	2
<b>Jun 2014 compared to Jun 2013</b>				
Main Expenditure Category Level	11	3	6	2
Sub Group Level	26	10	15	1
Section Level	30	8	19	3
<b>May 2014 compared to May 2013</b>				
Main Expenditure Category Level	11	3	7	1
Sub Group Level	26	7	17	2
Section Level	30	4	23	3
<b>Jul 2014 compared to Jun 2014</b>				
Main Expenditure Category Level	11	3	5	3
Sub Group Level	26	7	13	6
Section Level	30	7	16	7

**Table 3 outlines the distribution of price movements for four inflation periods:**

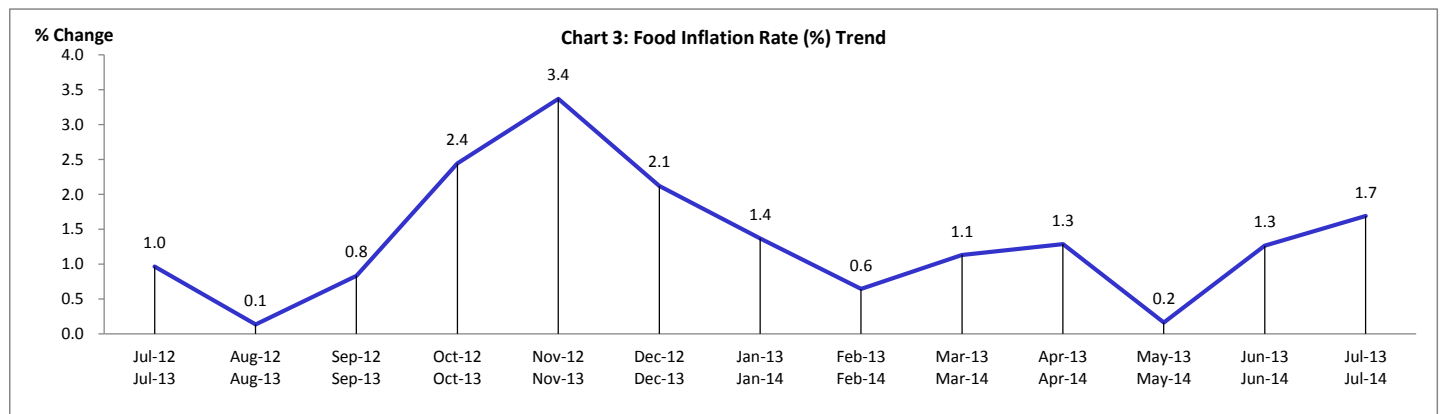
- Jul 2014 compared to Jul 2013
- Jun 2014 compared to Jun 2013
- May 2014 compared to May 2013
- Jul 2014 compared to Jun 2014

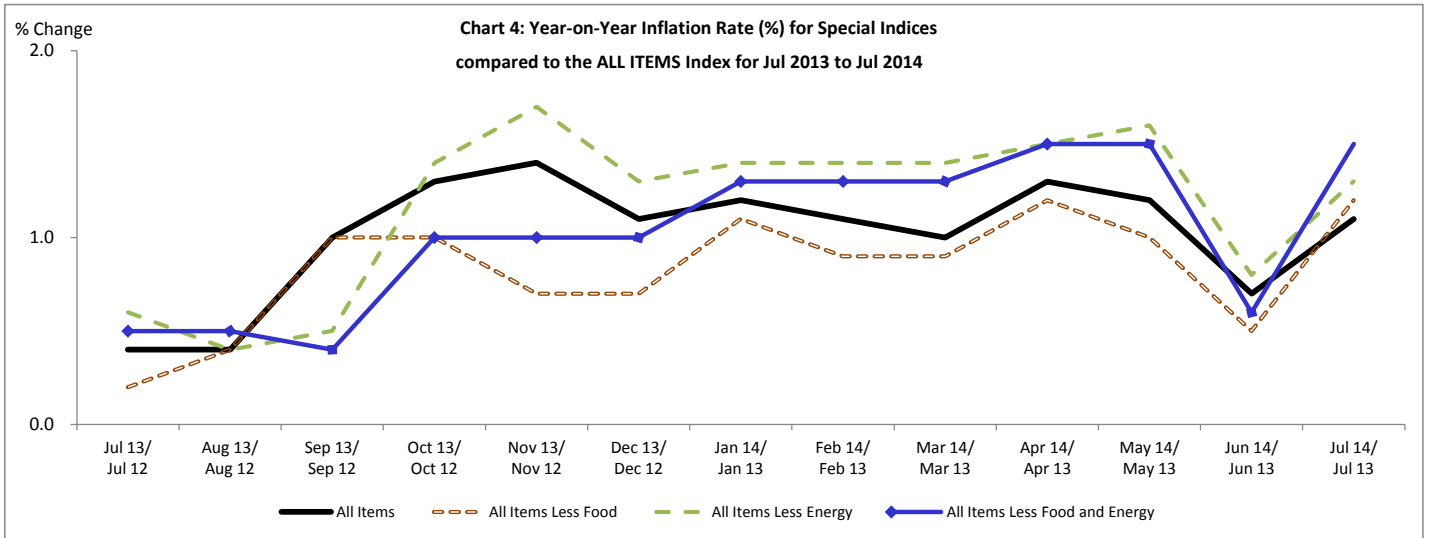
In Jul 2014 compared to Jul 2013, 1 of the 11 main expenditure categories recorded price decreases, while 8 recorded price increases. 18 of the 26 sub-group levels also recorded price increases for some of the items that fall in that level. These collective increases and decreases would account for the magnitude and direction of the current inflation rate. 2 of the 11 main expenditure categories recorded no price changes.

**Graphical Analysis of the Consumer Price Index**



**Featured Expenditure Category**





Energy includes: Fuel & Light (Electricity ; LPG/Cooking Gas) Gasoline at the pump

